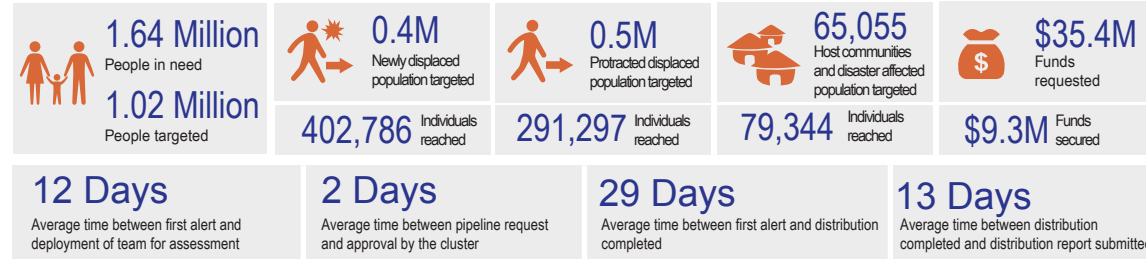




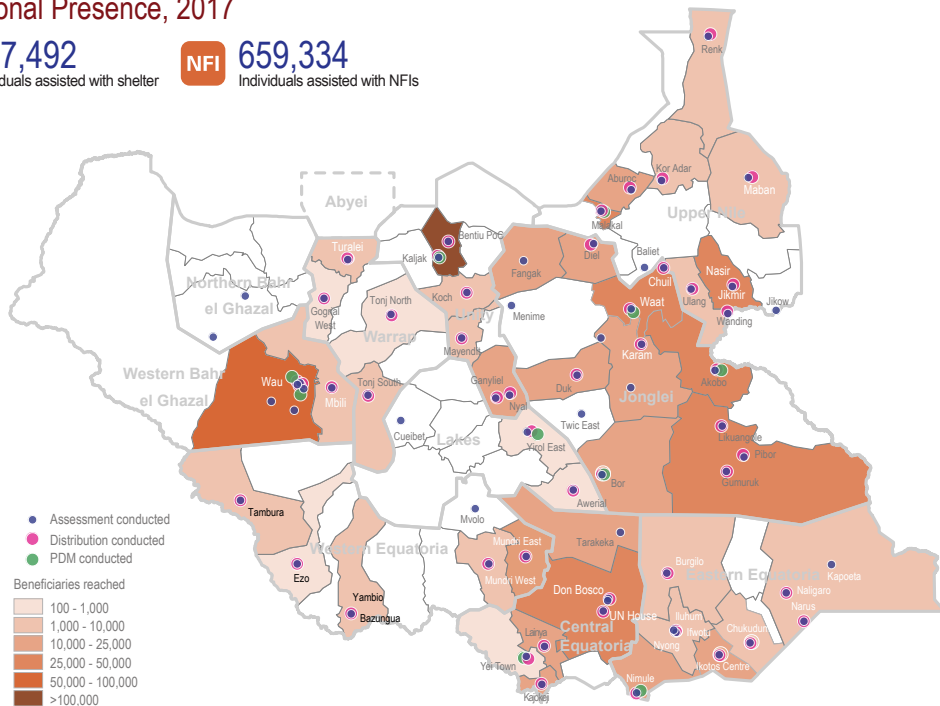
Overview

By October 2017, the cluster has reached 76% of the total Humanitarian Response Plan Target. During the month of August, more than 45,000 affected populations was reached, mainly in Jonglei and Upper Nile State. In Jonglei State most of the focus of the cluster operations was distributions of Non-Food Items to newly displaced IDPs in areas around Ayod, Uror and Waat. Some protracted population in Fangak were also recipients of Shelter/NFI services. In Upper Nile, partners have been supporting distributions in Ulang County and also around Jikow Area. While the assessment to Jikow showed urgent needs, the partners, in coordination with other clusters, are planning how to operationalize a response in such a severe challenging area in terms of logistics and protection. Likewise, partners based out of Wau keep gaining slow but gradual access to the Greater Bagari, where urgent multi-sectorial needs have been reported for months.

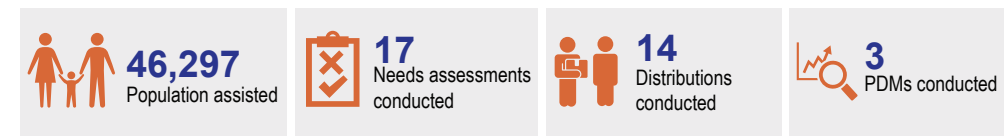
Key Figures, S-NFI Cluster Humanitarian Response Plan (HRP) 2017



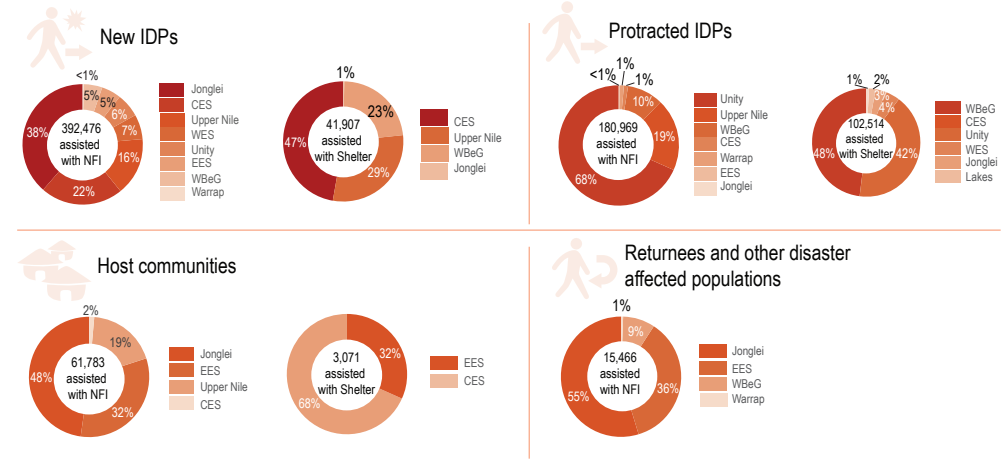
Operational Presence, 2017



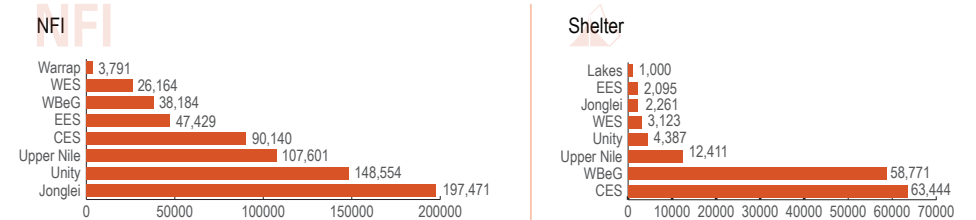
Achieved this Month



Individuals Reached in 2017



Individuals Assisted by State



Distribution Trends, 2017

