



## Overview

In November 2017, the cluster reached 828,701 individuals (81%) of the total Humanitarian Response Plan Target. During the month of November, partners reached more than 50,000 affected populations, mainly in Jonglei, Upper Nile and small portion in Central Equatoria State. In Jonglei State, the missions were focused to provide non-food items (NFI) assistance to the newly displaced population in Nyirol, Uror and AKobo County. In Upper Nile State, the partners continue to respond the needs in Ulang County as more IDPs were identified during the previous distribution. Partners are ready to conduct distribution in Jikow area once an inter-cluster mission identifies protection concerns. In Central Equatoria State, partners managed to respond the needs of the new IDPs in Lainya and Terekeka, as well as IDPs who have been hiding for over a year in the bush around Yei.

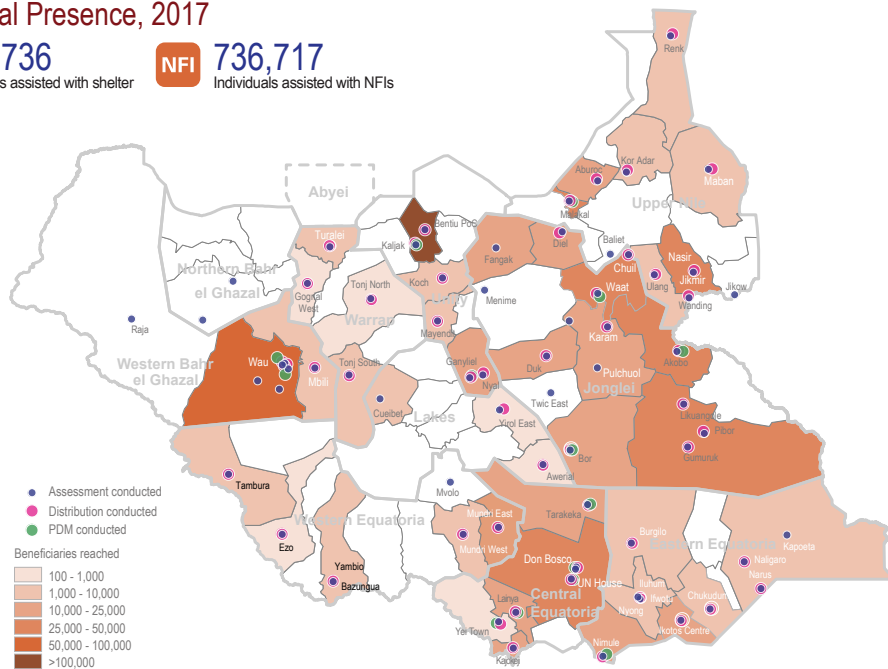
In Western Bahr el Ghazal State, partners respond to needs of extremely vulnerable IDPs in Raja County who have left behind without access to the services for a long time.

## Key Figures, S-NFI Cluster Humanitarian Response Plan (HRP) 2017

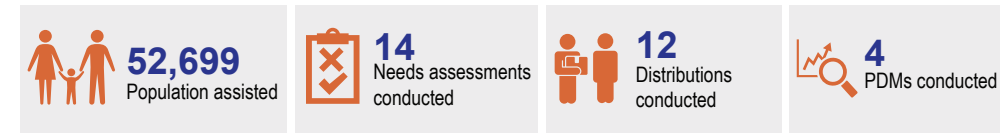


\* Source: Financial Tracking Service (FTS) UN OCHA, South Sudan Humanitarian Fund (SSHFF) is included

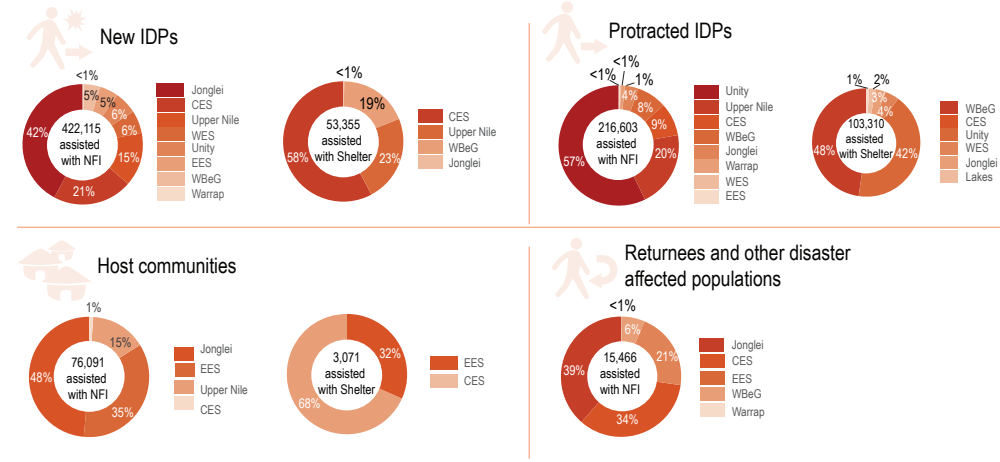
## Operational Presence, 2017



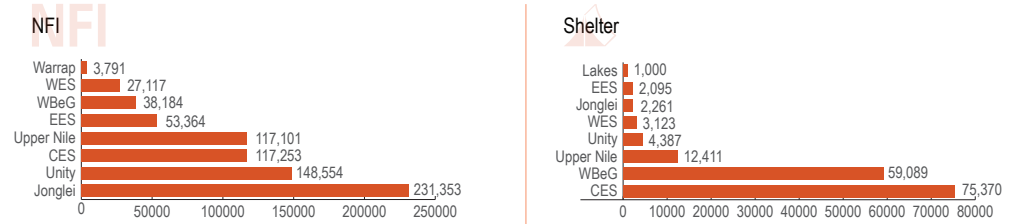
## Achieved this Month



## Individuals Reached in 2017



## Individuals Assisted by State



## Distribution Trends, 2017

