



# Shelter NFI Cluster South Sudan

ShelterSouthSudan.org

Coordinating Humanitarian Shelter

# Shelter/NFI Cluster Snapshot

South Sudan | December 2017

## Overview

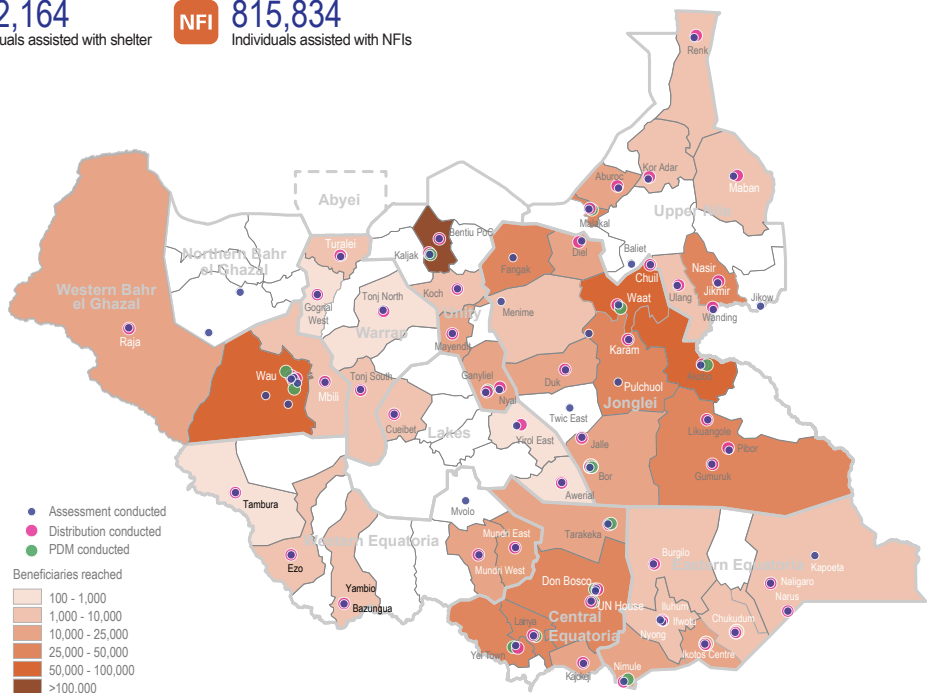
In December 2017, the cluster reached 927,571 individuals (91%) of the total Humanitarian Response Plan Target. During the month of December, partners reached 25,393 affected populations, mainly in Western bahr el Ghazal, Lakes and Jonglei State. In Western Bahr el Ghazal State, the missions were focused to provide non-food items (NFI) assistance to the newly displaced population in Raja County. In Lakes State, the partners responding the needs in Cueibet as the results of the new conflict at the border between Lakes and Warrap State. In Jonglei State, partners managed to respond the needs in Jalle, Bor South County after some months delayed due to the access issue.

## Key Figures, S-NFI Cluster Humanitarian Response Plan (HRP) 2017

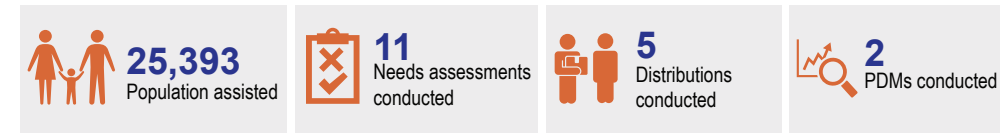


\* Source: Financial Tracking Service (FTS) UN OCHA, South Sudan Humanitarian Fund (SSHf) is included

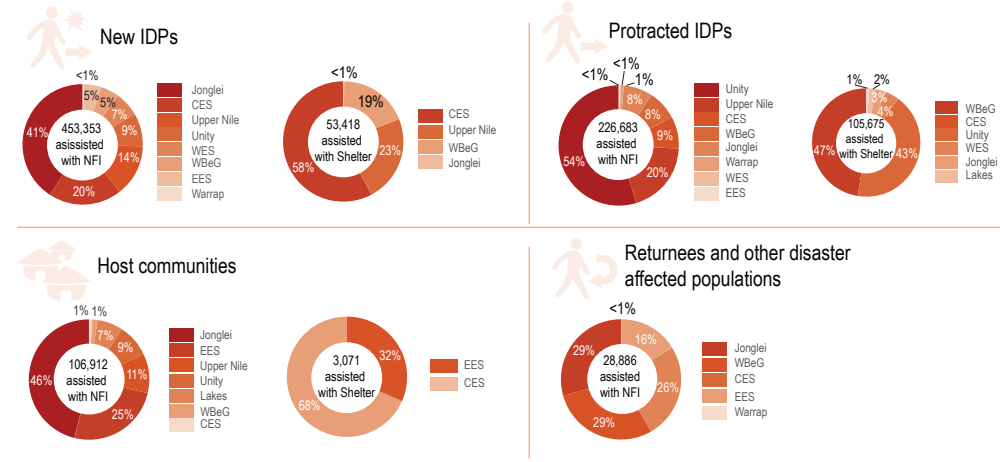
## Operational Presence, 2017



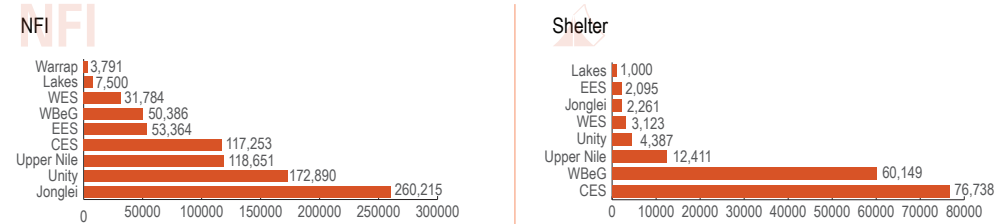
## Achieved this Month



## Individuals Reached in 2017



## Individuals Assisted by State



## Distribution Trends, 2017

